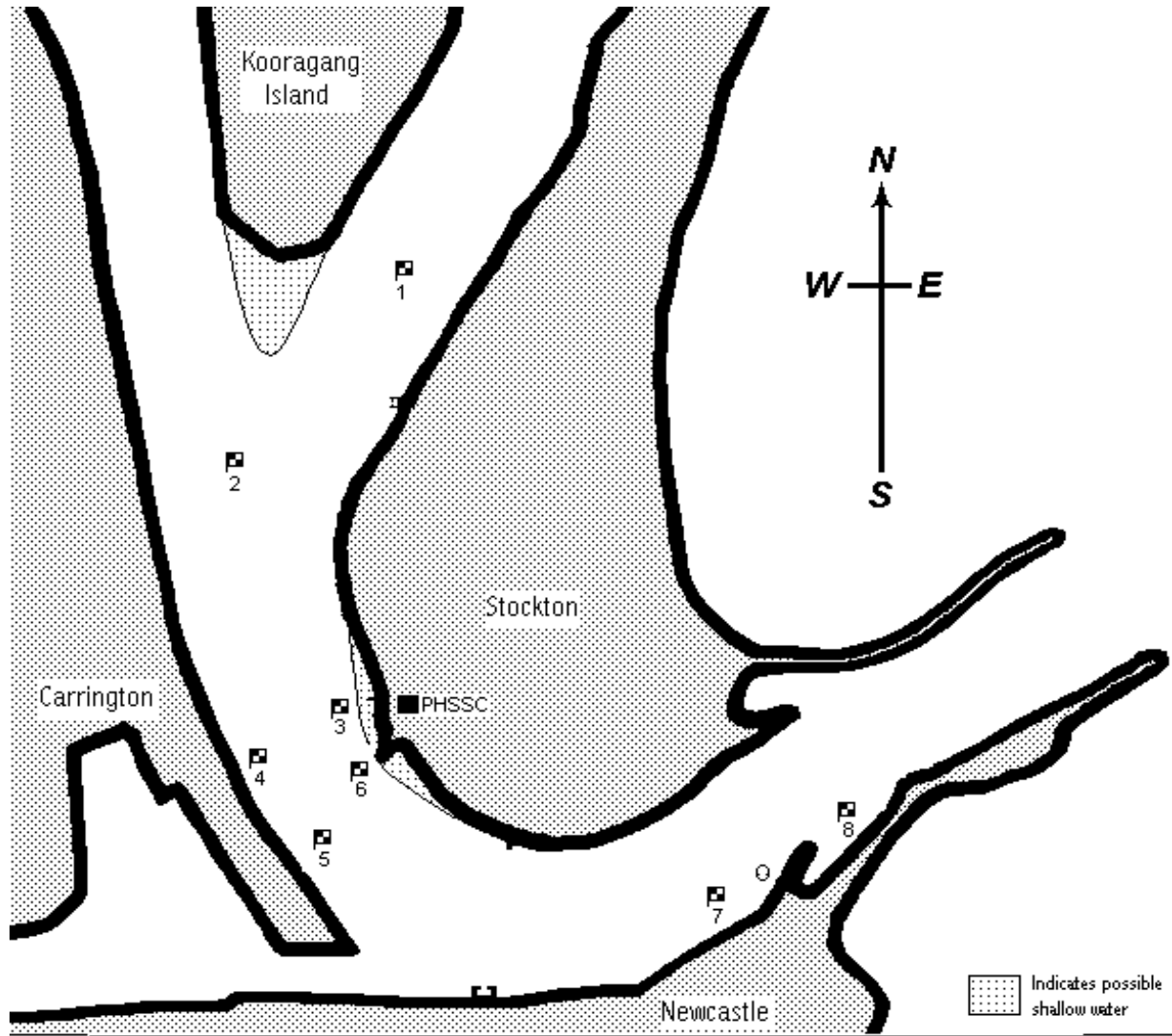


# Port Hunter 16ft Sailing Skiff Club

## MG14 Championship Courses



**East & NorthEast** Start near 5 to 8p 4s 3s 5p 8p 4s 3s 5p 8p 4s finish between 3s and Club.

**SouthEast** Start near 3 to 7s 2s 7s 2s 7s 2s 7s 2s finish between 3s and Club.

**South** Start near 2 to 6s 1s 6s 1s 6s 1s 6s 1s finish between 3s and Club.

**North** Start near 3 to 1p 6p 1p 6p 1p 6p 1p 6p finish between 3p and Club.

**NorthWest** Start near 3 to 2p 7p 2p 7p 2p 7p 2p 7p finish between 3p and Club.

**West & SouthWest** Start near 3 to 4p 8s 5s 3p 4p 8s 5s 3p 4p 8s 5s finish between 3p and Club.

Note: Buoy positioning is approximate only, small variations for prevailing winds may be necessary.

**REMEMBER – ALWAYS KEEP CLEAR OF SHIPPING.  
MINIMUM 500m FROM BOW WHEN CROSSING.**