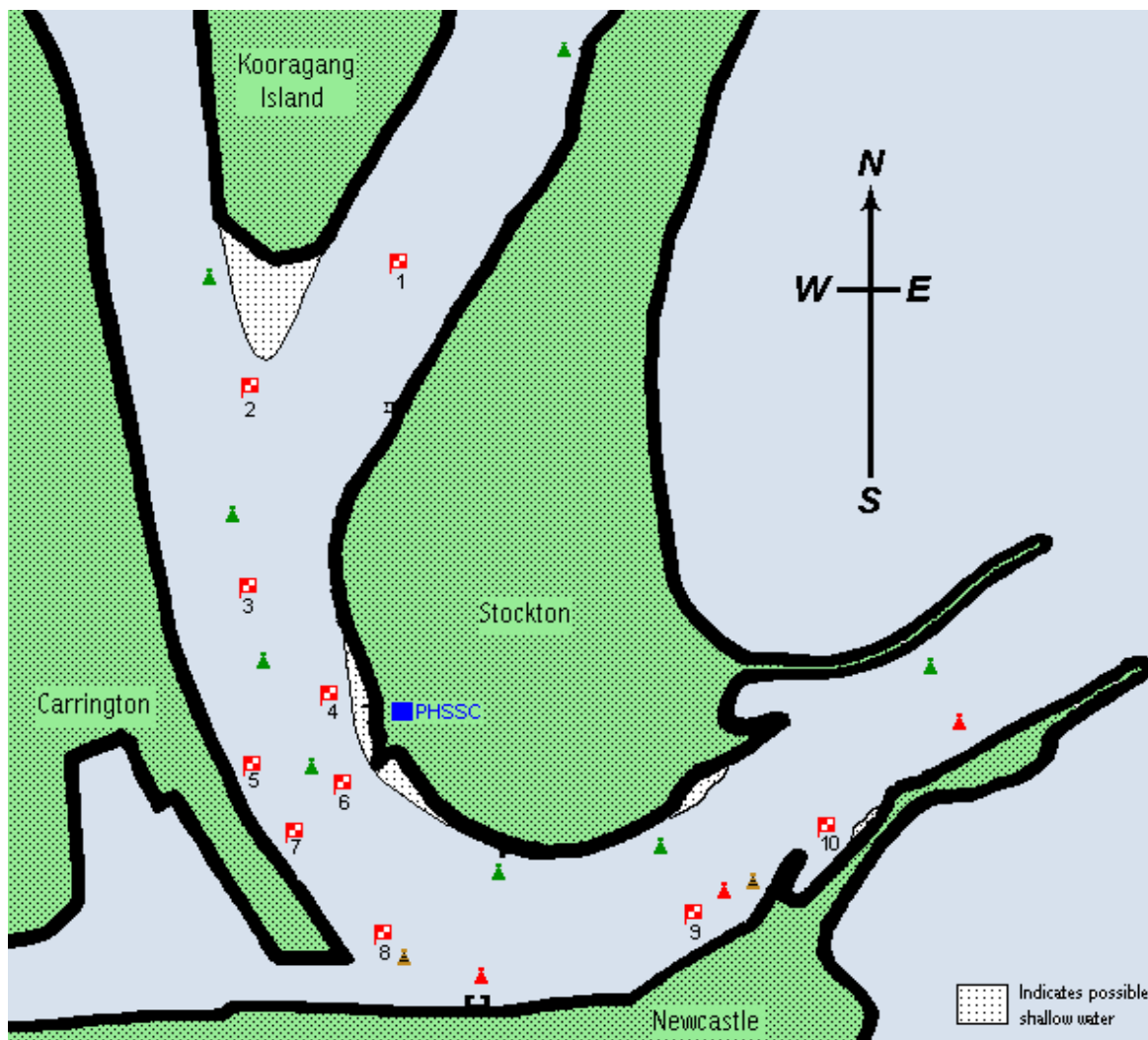


Port Hunter 16ft Sailing Skiff Club

16ft Skiff Courses



CHAMPIONSHIP COURSES

- East & NorthEast** Start near 8 to 10p 5s 4s 7p 10p 5s 4s 7p 10p 5s 4s 7p 10p 5s finish off Club.
- SouthEast** Start near 3 to 9s 3s 9s 3s 9s 3s 9s 3s 9s 3s finish off Club.
- South** Start near 2 to 6s 1s 6s 2p 6s 1s 6s 2p 6s 1s finish off Club.
- West & SouthWest** Start near 9 to 7s 4p 5p 10s 7s 4p 5p 10s 7s 4p 5p 10s 7s finish off Club.
- NorthWest** Start near 9 to 3p 9p 3p 9p 3p 9p 3p 9p 3p 9p finish off Club.
- North** Start near 8 to 1p 2p 6p 1p 6p 2p 6p 1p 6p 2p 6p finish off Club.

NON-CHAMPIONSHIP COURSES

- East & NorthEast** Start off Club to 10p 5s 4s 7p 10p 5s 4s 7p 10p 5s 4s 7p 10p 5s finish off Club.
- SouthEast** Start off Club to 9s 3s 9s 3s 9s 3s 9s 3s 9s 3s finish off Club.
- South** Start off Club to 6s 1s 6s 2p 6s 1s 6s 2p 6s 1s finish off Club.
- West & SouthWest** Start off Club to 10s 7s 4p 5p 10s 7s 4p 5p 10s 7s finish off Club.
- NorthWest** Start off Club to 3p 9p 3p 9p 3p 9p 3p 9p 3p 9p finish off Club.
- North** Start off Club to 1p 2p 6p 1p 6p 2p 6p 1p 6p 2p 6p finish off Club.

Note: Buoy positioning is approximate only, small variation for prevailing winds may be necessary.